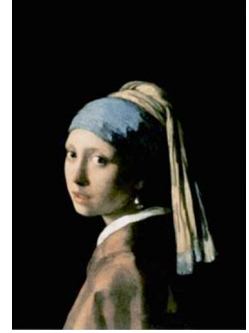


Grading Rubric: Part One: Self Portraits

Name: _____
Period: _____



The Masters

(finding Line, Shape, Value, and Color)

- 1. Effort (Participation) (25%)
- 2. Artistic Content (followed directions) (50%)
 - a) print image in color
 - b) print image in grayscale
 - c) line drawing
 - d) shape drawing
 - e) value drawing
 - f) color analysis
 - g) art history homework
- 3. Craftsmanship (neatness) (25%)
- How you challenged yourself in completing this assignment.
excellent good average weak

Art History Homework Answer Sheet:

1.	6.
2.	7.
3.	8.
4.	9.
5.	10.

Final Grade: _____